



Coldharbour Lane, Brixton, SW9

3 bedroom house for sale

£1,150,000

Freehold

Property Details

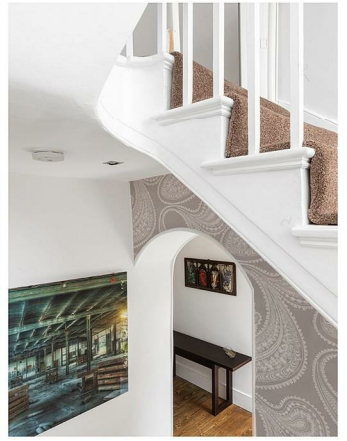
An impressive period home, offering three double bedrooms, three bathrooms, generous dimensions and a particularly attractive garden. At almost 2,000 square feet of living space minutes from the heart of Brixton, with high ceilings and bright, airy rooms, this lovely property will appeal to a wide range of purchasers. Arranged over four floors, this characterful house offers desirable dimensions with a bright and airy atmosphere. The property comprises a large and modern eat-in kitchen, offering plenty of space to dine, relax, entertain and cook in a particularly appealing kitchen completed with a trendy island/ breakfast bar. There is a convenient WC and significant storage available off this impressive room. The floor above the kitchen provides access to the large South-East facing private garden and offers a substantial L shaped reception, a large yet cosy space with handsome exposed wood flooring and an impressive feature fireplace. Large sash windows and wood shutters add to the characterful appeal of the space. Arranged over the top two floors of the house, three generous double bedrooms. Two come equipped with handy en-suite bathrooms and there is a further family sized bathroom on the first floor, which is a particularly attractive space in itself. Both the exterior and interior of this house are handsome, with the grand feel you would expect from an imposing period building, whilst also feeling like a true home.

Features

- Three double bedrooms
- Three bathrooms
- Over 1800 square feet of internal space
- Semi-detached period townhouse
- Bright, airy and characterful
- Large, South-East facing, private garden
- Moments from Brixton tube station and Brixton Village
- Loughborough Junction station in moments
- Close to Ruskin Park
- Easy access to Herne Hill & Brockwell Park

Council tax band F EPC rating (null)





Coldharbour Lane, Brixton, SW9

K

3 Bedroom House

Approx internal area:

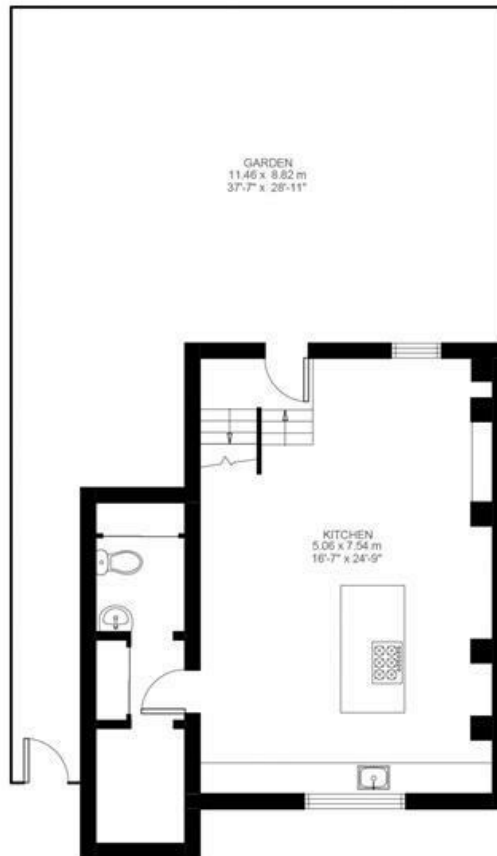
1873 sqft 174 sqm

While we do try our very best, floor plans are produced as a guide only and we take no responsibility for the precise accuracy with which any property is represented

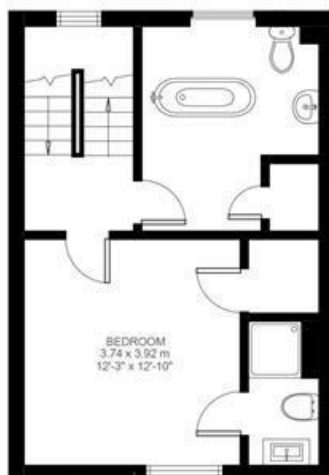
Coldharbour Lane



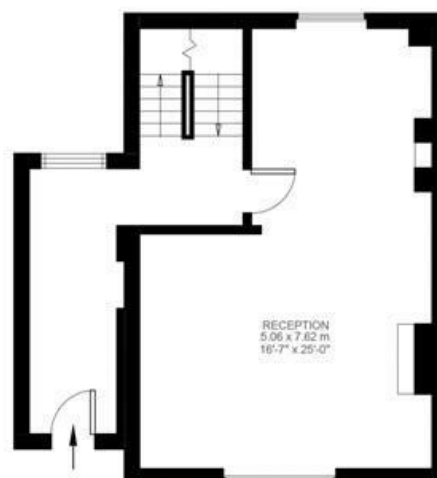
Second Floor



Lower Ground Floor



First Floor



Raised Ground Floor



Coldharbour Lane, Brixton, SW9

